

Simply a question of better measurement



SCHMIDT® *Bluetooth*® Module BT 10.010

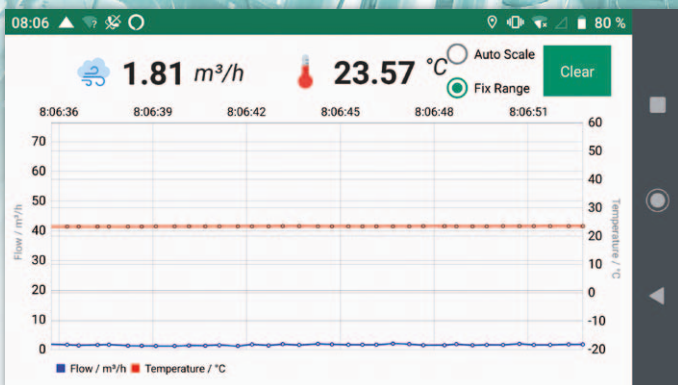
Sensor values wireless, any time and everywhere



- Radio module featuring *Bluetooth*® wireless technology for remote transmission of
 - standard volume flow V_N
 - medium temperature T_M
- Configuration of the sensor via *Bluetooth*® connection
- Display and real-time recording of measuring values via free-of-charge **SCHMIDT**® **Sensor App** on a mobile Android device – wireless, any time and everywhere ¹⁾
- Processing of recorded data
- Plug-and-Play



SCHMIDT® smart solutions featuring *Bluetooth*® wireless technology



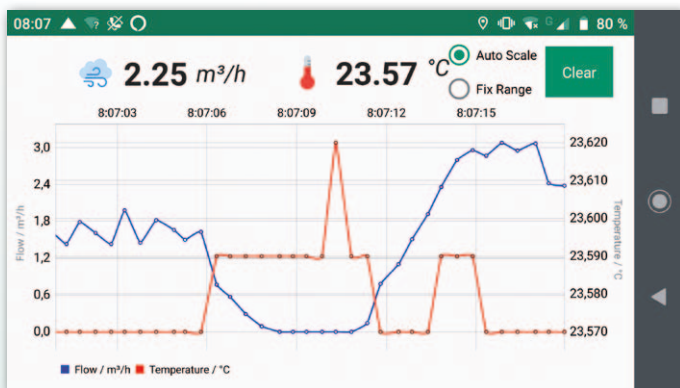
Perfect for use when current measuring values of standard volume flow and medium temperature from different sensors shall be indicated on site temporarily one after another. Important sensor parameters can be customized by the user.

¹⁾ Depending on radio range, typically 10 m on sight. The SCHMIDT® *Bluetooth*® Module BT 10.010 can be placed up to 30 m away from the sensor with a cable to increase the radio range.

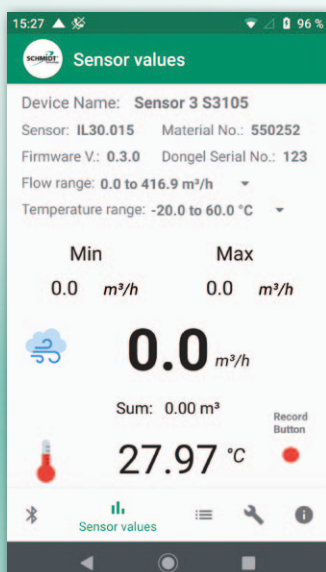


In many installations, displays built into the flow sensor either cannot be seen or due to the mounting position of the sensor simply cannot be read. Nevertheless, there is a need from time to time to display the measured values of the sensors on site.

Now this can be realised with the **SCHMIDT® Bluetooth® Module BT 10.010** in a very easy and simple way: Any **SCHMIDT® Mass Flow Sensor** can be equipped with a *Bluetooth®* radio module, being linked to the module connector of the sensor. The plant operator can now select one sensor after another with the **SCHMIDT® Sensor App** installed on his mobile Android device and display real-time measurements graphically on a smartphone or tablet and even record the values (datalogger function). The recorded data can be saved as a CSV file and processed afterwards.



Indication of actual measuring values as graphs with auto scaling or fix range to show a history of values.

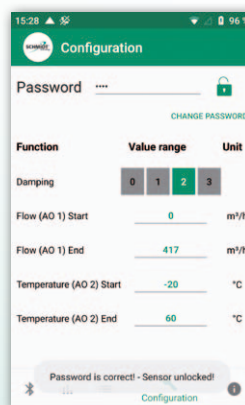


- Actual sensor values like
- Sensor name / serial number
 - Sensor model / type
 - Sensor article number
 - Sensor measuring ranges
 - Min / max values
 - Actual values displayed at the **SCHMIDT® Sensor App**

Real-time recording by pressing the red record button

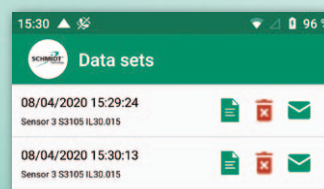
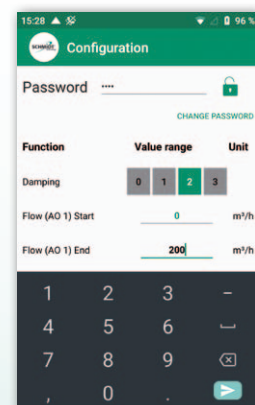
Want to learn more about **SCHMIDT® smart solutions**? Further information are available on our website www.schmidt-sensors.com or at Mr Oliver Joos, phone +49 77 24 / 899-198 or by e-mail at o.joos@schmidttechnology.de

Technical Data	
Additional necessary device	Mobile device, e.g. smartphone or tablet System requirements: - Android® version 7.0 or higher - <i>Bluetooth®</i> version LE (4.0) or higher To use the full functionality of the SCHMIDT® Sensor App for Android, an active internet connection is required.
Radio range	According to usual <i>Bluetooth®</i> standard, e.g. 10 m on sight; radio range extension max. +30 m with cable
Display and recording	Standard volume flow V_N and medium temperature T_M via free-of-charge SCHMIDT® Sensor App
Power supply	Via module connector of SCHMIDT® sensor
Connection cable	Only when need to place it away from the sensor; $L < 30$ m; wire ≥ 0.25 mm ² ; non-shielded
Dimensions	$L = 61$ mm; $\varnothing 14$ mm
Weight	10.3 g
Article-No.	560500
SCHMIDT® Sensor App	



Parameters possible to be customized by user:

- Name of sensor
- Analog outputs (scaling)
- Damping
- Measurement units (flow and temp.)



Recorded data can be stored, shared by e-mail and processed later with other additional software.

The *Bluetooth®* word mark and logos are registered trademarks owned by Bluetooth SIG, Inc. and any use of such marks by **SCHMIDT Technology GmbH** is under license. Other trademarks and trade names are those of their respective owners.